

**Restaurant** Area code 0153

- |                           |                               |
|---------------------------|-------------------------------|
| 1 Isami Sushi 87-2148     | 11 Hamada Shoten 87-3311      |
| 2 Jun no Ban-ya 87-5667   | 12 Shojuen 87-3852            |
| 3 Café Sakan 87-2529      | 13 Shiretoko Shokudou 87-4460 |
| 4 Hirose 080-5729-0104    | 14 Snack Mine 87-2673         |
| 5 Iwami 87-4319           | 15 Snack Miyuki 87-3482       |
| 6 Shiretoko Serai 85-8800 |                               |
| 7 Matsuo 87-2829          |                               |
| 8 Shizuka 87-2733         | 16 Hamakko Yama-chan 88-2689  |
| 9 Toriyoshi 87-3387       | 17 Marumi 88-2146             |
| 10 Ban-ya 87-3132         |                               |

Please turn over

**Accommodation** Area code 0153 Onsen

- |                                  |                                      |
|----------------------------------|--------------------------------------|
| 1 Rausu Daiichi Hotel 87-2259    | 11 Pension Rausukuru 89-2036         |
| 2 Hotel Minenoyu 87-3001         | 12 Minshuku Honma 89-2309            |
| 3 Hotel Sakaeya 87-2171          | 13 Minshuku Ginya 88-2134            |
| 4 Business Hotel Isaribi 87-2533 | 14 Rausu no Yado Marumi 88-1313      |
| 5 Takashimaya Ryokan 87-2191     | 15 Minshuku Seikoumaru 090-9086-8595 |
| 6 Minshuku Yonemaru 87-6110      | 16 Minshuku Ippuku Douzo 88-2328     |
| 7 Minshuku Washi no Yado 87-2877 | 17 Rider House Max 89-2566           |
| 8 Minshuku Nomura 87-4071        | 18 Minshuku Tabi no Tochu 88-2762    |
| 9 Rider House Okigaruya 87-2189  | 19 Shiretoko no Yado 080-5583-0430   |
| 10 Shiretoko Serai 85-8800       | 20 Maruichi 85-7739                  |

Please turn over

**Campsite**

- |                                 |
|---------------------------------|
| 21 Rausu Onsen Campsite 87-2126 |
| 22 Rausu Auto Campsite 88-1094  |

**Cruising Fishing Small Boat** Area code 0153

- |  |
|--|
| 1 Shiretoko Aruran 87-4477                 |
| 2 Shiretoko Nature Cruise 87-4001          |
| 3 Hamanasu 87-3830                         |
| 4 Goziraia Sightseeing 85-7575             |
| 5 Kita no Shiretoko Tourism 080-8299-6354  |
| 6 Tomoe II 88-2026                         |
| 7 Shiretoko Rausu Lincle 080-6072-0705     |
| 8 Shiretoko Yushin Tourism 85-7337         |
| 9 World Heritage Cruise Hidetomaru 87-3779 |

**Rausu-Kunashiri Observation Tower**

The best spot to see Kunashiri Island, Rausu Fishing Port and Mt.Rausu.

From the middle to the end of May, the cherry blossoms are beautiful.

From Michi no Eki 2.2km

From Michi no Eki 4.1km

**Shops** Area code 0153

- |                                   |  |
|-----------------------------------|--|
| 1 Kaisen Kobo 87-3542             |  |
| 2 Hamada Shoten 87-3311           |  |
| 3 Funaki Shoten 87-5666           |  |
| 4 Abe Shoten 0120-87-2094         |  |
| 5 Chemicle 85-7235                |  |
| 6 Cho-e-maru 85-7485              |  |
| <b>Reverse side</b>               |  |
| 7 Noritomo Asakura Shoten 88-2303 |  |
| 8 Soman Suisan 88-2208            |  |
| 9 Rausu Kaisan 88-1155            |  |
| Rausu Kaiyo Shinsosui 88-5470     |  |

**Reverse side**

Shiretoko World Natural Heritage  
**SHIRETOKO RASU MAP**

Public facilities



**Sightseeing Spot**

- Rausu-Kunashiri Observation Tower
- Shiretoko Rausu Visitor Center
- Shiretoko World Heritage Rusa Field House
- Whale View Park
- Rausu Municipal Museum
- Seseki Waterfall
- Minehama Parking
- Bear Rock
- Shiokaze Park
- Shiretoko Pass

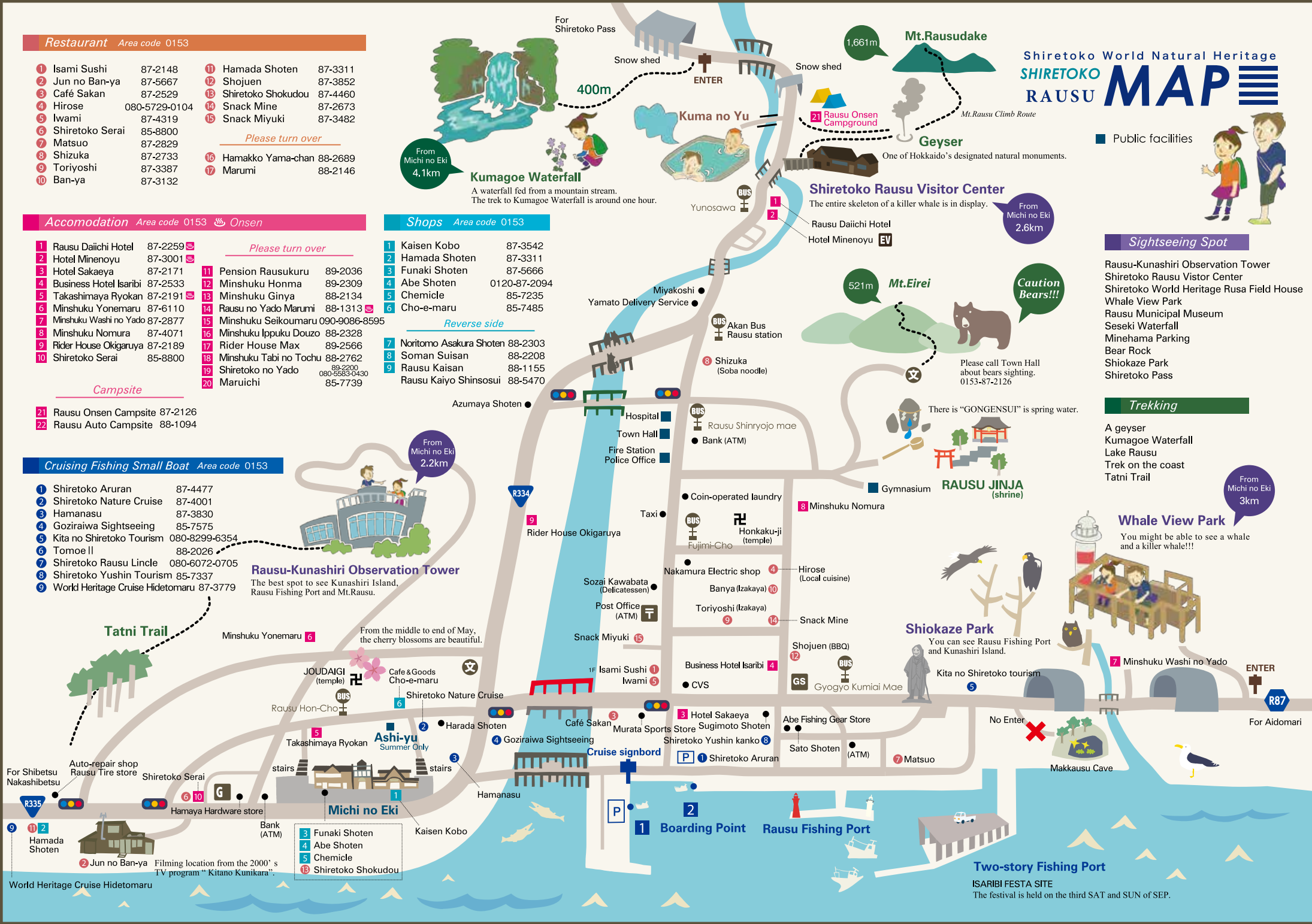
**Trekking**

- A geyser
- Kumagoe Waterfall
- Lake Rausu
- Trek on the coast
- Tatni Trail

**Whale View Park**

You might be able to see a whale and a killer whale!!!

From Michi no Eki 3km



World Heritage Cruise Hidetomaru

**Two-story Fishing Port**  
ISARIBI FESTA SITE  
The festival is held on the third SAT and SUN of SEP.